



**BEAM**  
PRIMARY SCHOOL

# Newsletter

July 2023

## Update from Miss Whittington

Dear Parents and Carers,

Thank you once again for your sustained support, as parents, of our work in school. We have recently received a number of 'thank you' letters from the families of those leaving Beam and transitioning into other year groups.

The letters are a source of encouragement and frequently reference the outstanding academic provision in and beyond lessons and the school as a nurturing environment of empathy, vision and leadership. In turn, we are inspired by the growth and maturity demonstrated by our leavers as they progress to secondary school. Class of 2023 will always be in our hearts.

### Awards

I am delighted to announce that On Wednesday, 5 July 2022, Classics for All marked its third annual Teaching Awards Ceremony to recognise the outstanding achievements of schools, teachers, and network coordinators nationwide.

For the London and South East Network, I am delighted to announce that we were recognised and awarded for our Latin provision. Congratulations to all!!

Please visit: <https://classicsforall.org.uk/news-and-events/events/teaching-awards-2023>

### Wellbeing Award

We also were recognised for our Wellbeing efforts across the school. This award focuses on changing the long-term culture of the whole school, using an evidence-based framework to drive change. It ensures that mental health and wellbeing sit at the heart of our school life. Congratulations to the Beam team!

### Boxing Futures

Congratulations to our boxing graduates. By changing lives through non-contact boxing, they empower young people to develop their physical and mental wellbeing and build the confidence they need to pursue their dreams.

### Summer holiday

May I extend my very best wishes to all our pupils and families for the holiday period. We would encourage every pupil to take time to rest, to read, to challenge themselves (with something new or different), to sustain fitness, to be bold in adventure, to learn, to foster friendships and extend kindness ... and to do so with a deliberate limitation on 'screen time'!

We look forward to seeing you on **Tuesday, 5 September 2023**.

Enjoy the sunshine (and rain)!

Yours sincerely,  
Ms T Whittington

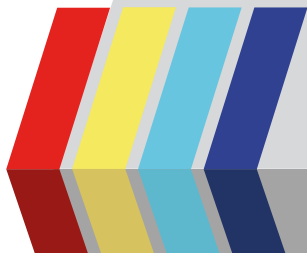
## Headteachers Awards

RCB - Ariana Manionyte  
RLS - Evelin Rata  
RMK - Jihana Uddin  
1HH - Rebecca Boadi Amoah  
1JB - Matthew Mejuto Gonzales  
1NH - Jireh Sekamate  
2DM - Freya Arunasalam  
2FT - Isabel Kryeziu  
2NM - Ayra Ahmed  
3CE - Aqsa Passa  
3TM - Beqa Zaalishvili  
3WA - Simisola Ajayi  
4RD - Aaron Neguse  
4SS - Romaisa Latif  
4TH - Hashim Ahmed  
5DC - Kashan Iqbal  
5LR - Faith Olaseni  
5NN - Sasha Masha  
6AE - Amina Noor  
6LW - Nikol Peykova  
6ST - Sampriti Habib  
Apollo - Chikamso Egbuonu  
Atlantis - Shanae Makuwuro  
Clever Cats - Teddy Junior  
Atomey  
Art - Esther Ladipo  
Sport - Quincy Don- Osawaru  
Nursery AD - Daria Karova  
Nursery AM - Aliyah Backry  
Nursery PM - Victoria Ivanova





**BEAM**  
PRIMARY SCHOOL



# Newsletter

July 2023

## School Awards

-Beam has successfully renewed the Wellbeing Award with the report mentioning that 'Beam County Primary is a large school that is big enough to cope but small enough to care for each & every pupil'

-Beam was also nominated and won the 'Classics for All Stand Out School Award', for everybody's hard work during Latin class this school year. Thank you to Mrs. Cook, who received the award on Beam's behalf,

-Beam also received the 'Creating Community Award 2023' where Year 5 students were encouraged to use their entrepreneurial skills to plan, design and develop a wellbeing kit, supporting homelessness in the UK. As part of the project the children were invited to the House of Lords, to meet Lord John Bird (co-founder of the Big Issue)



## Events and Celebrations

This term Year 4 and Year 5 students enjoyed an amazing time on their residential to Stubbers Adventure Centre.

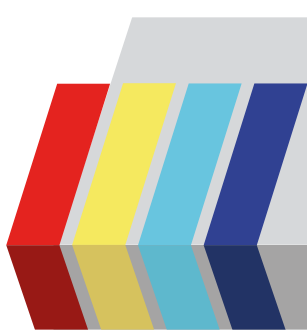


The school also enjoyed celebrating the Kings Coronation With a party on the field, a flash mob and a rendition of the National anthem





**BEAM**  
PRIMARY SCHOOL



# Newsletter

July 2023

## Events and Celebrations continued

We enjoyed the 1<sup>st</sup> ever Beam taste festival  
Thank you to Mrs. McKenzie for organising  
a brilliant afternoon, enjoyed by pupils and  
Parents alike



Pupils from Beam worked together with  
Students from Dagenham Park to take part  
In the Inspire Dance Festival. Where they put on a  
Special performance for the Mayor.  
Congratulations to all pupils involved with  
this amazing performance



Also this term, the school took part in the  
Trees 4 Cities Project, which encouraged  
the pupils to take part in gardening within  
The school grounds



BEAM WEBSITE



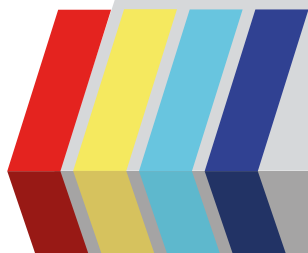
BEAM TWITTER



BEAM YOUTUBE



**BEAM**  
PRIMARY SCHOOL



# Newsletter

July 2023

## Staff Leaving Beam end of 22/23

- Mr Endacott- Y6
- Mrs Nawaz – Y3
- Mr De la Fuente- Y4
- Ms Helal- Y4
- Miss Reeves–Clever Cats
- Miss Rogers- LSA
- Miss Okerenta - LSA

## Staff Joining Beam in 23/24

- Ms Juffs - Y3
- Mr Hall – Y4
- Ms Sunatharamoorthy – Y4
- Ms Waldron – Y5
- Ms Russo – Y6
- Ms Hickey - Atlantis



BEAM WEBSITE



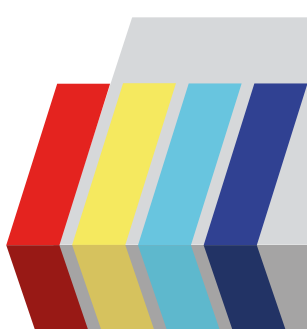
BEAM TWITTER



BEAM YOUTUBE



**BEAM**  
PRIMARY SCHOOL



# Newsletter

July 2023

## National Online Safety (NOS)

The online world is posing an ever-increasing risk to children, and it is important that schools, parents and carers work together to take an active role in teaching children about online dangers. Learning how to act safely when using the internet is an incredibly important part of safeguarding our children.

We are therefore delighted to announce that Beam County Primary School have shown our commitment to protecting our pupils online by working with National Online Safety NOS- providing resources for all parents and carers.

To create your parent account, please follow <https://nationalonlinesafety.com/enrol/beam-county-primary-school>



You can also access National Online Safety online via any device- including via our brand-new smartphone app. To download the app, please go to:

<https://apps.apple.com/gb/app/national-online-safety/id1530342372>

<https://play.google.com/store/apps/details?id=uk.co.nationaleducationgroup.nos>

Alternatively, search for 'National Online Safety' in the App Store/Google Play Store.

Attached are useful guides explaining what parents need to know about the popular app 'Snapchat' and how we can support our younger pupils with their screen time exposure.

## Toilet Training Advice

Toilet training is one of the many difficult stages of parenting.

If your child has started school and they are not yet toilet trained you can:

- speak to your child's health visitor (if they are under 5 years old)
- speak to your GP
- speak to your child's teacher

It is important to let your child's teacher know if you require support with toilet training. A consistent and collaborative approach at home and school will have the best outcomes for your child.

The link below provides some helpful advice and guidance:

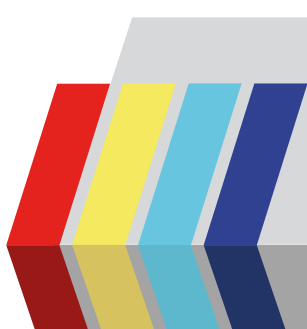
[How to potty train - NHS \(www.nhs.uk\)](http://www.nhs.uk)

**NHS**  
nhs.uk





**BEAM**  
PRIMARY SCHOOL



# Newsletter

July 2023

## Ready, Respectful, Safe

At Beam, we expect and encourage good behaviour and self-discipline from all pupils to cultivate an environment that promotes emotional development, effective learning and high standards. Through visible consistency, we are restorative in our approach, using a range of methods and strategies to maintain positive relationships. Our three simplified core rules: Ready Respectful Safe, ensure that we are consistent in our approach.

You will find our updated Behaviour Policy here: <https://beamcountyprimaryschool.org/policies>

We aim to provide an inclusive, calm, quiet atmosphere in the school and encourage children to move around responsibly. Our expectations of the children can only be realised through the co-operation and support between home and school. Should any difficulties be encountered, we invite parents to work with us to resolve them. Positive behaviour is a collective responsibility within the school. This extends beyond the individual classroom to cover every child and every area of the school and playground.

## Friends of Beam

Thank you for all your support through this school year. Including the School disco's enjoyed by the pupils

## Attendance

**90% Attendance = ½ a day missed every week!**

That is 4 weeks of learning missed in school year. If that is the same for all of a child's time at primary school they would have missed out on ½ a school year.

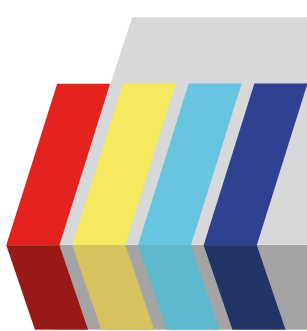
90% or below attendance means that is a child as a persistent absentee.

**Start off the school year as you mean to go on with 100% attendance**





**BEAM**  
PRIMARY SCHOOL



# Newsletter

July 2023

## Speech & Language Advice

When we talk about children's speech and language development, we are thinking about not just the things that children can say (expressive language) but also the things that children can understand (receptive language).

The website has lots of helpful information and advice about what we should be expecting children to be able to say and understand at certain ages. The poster that can be found following the link ([PRIMARY POSTER AW V2.indd \(ican.org.uk\)](#)), provides a helpful overview.

At Beam, we are incredibly fortunate to employ a private Speech and Language Therapist who works with us one day per week. If you feel that your child might benefit from an assessment of their speech and language skills, then please discuss this with your child's teacher.

One of the very best things that you can do to promote speech and language development with your child is reading together and talking about stories and words. Try making shared story time a part of your regular routine - even if your children are older!

K. L. Mooney (SENDCo)

## School Uniform

The school office will be opening at the following dates and times to enable Parents to purchase school uniform. Including preloved options,

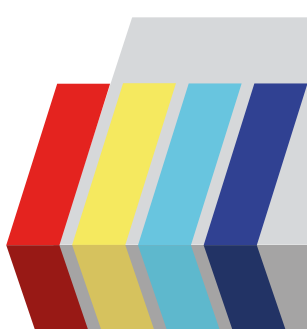
**Thursday 27<sup>th</sup> July - Friday 28<sup>th</sup> July**  
**Monday 4<sup>th</sup> September**  
**9am-12pm**

Please ensure that all uniform is clearly labelled with your child's name





**BEAM**  
PRIMARY SCHOOL



# Newsletter

July 2023

## Medical Information

At Beam, we have a wide range of medical needs. Keeping children safe at school is highest priority and as such we have a full time first aid and medical assistant: Mrs Stiell Reid. All staff have had recent training on Epilepsy and Anaphylaxis, we work closely with the School Nursing team to ensure we are up to date with training and new information coinciding with the medical needs at Beam, particularly those with a health care plan. We are regularly in contact with medical professionals for advice and guidance to ensure the safest decisions are made for children as it is those professionals who can best make those recommendations with their knowledge and experience.

### Administering medication

Sometimes after an illness, medication may be prescribed by a GP. As far possible we recommend that medicine is taken at home however this is not always possible, such as with antibiotics. If children require medicine at school, a short meeting will need to be held at the office to complete the medication record before any medicine can be administered, this includes self-administration. Please do not send medication in your child's school bag without attending a meeting at the office, as we will be unable to administer this and will call you to make arrangements for you or someone to attend school at the time it needs to be given.

Medicine not in its original packaging or without a pharmacist label cannot be administered or given to a child for self-administration and in no circumstances will this be agreed. Similarly, as advised by the NHS NELFT School Nursing Team, only medicine prescribed by a UK GP/Pharmacist may be administered in school.

### Asthma

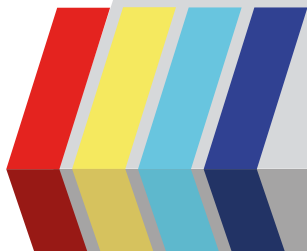
We have a number of children with asthma, a common lung condition that causes occasional breathing difficulties. Most children with asthma have two inhalers, a preventer inhaler which is usually brown and a reliever inhaler, usually blue. It is very important that children have a reliever (blue) inhaler at school that is in date. Furthermore, we should have information about your child's asthma through an asthma plan, this can be completed by your asthma nurse, usually children are reviewed annually, so please take this up with your GP if you are not contacted. We also seek permission for use of the emergency inhaler if a pupil's inhaler is missing, out of date, faulty or empty, again please ensure you have signed this form for your child.







**BEAM**  
PRIMARY SCHOOL



# Newsletter

July 2023

## Medical Information continued

### Waist bags

The Department for Education states: Wherever possible, children should be allowed to carry their own medicines and relevant devices or should be able to access their medicines for self-medication quickly and easily. Children who can take their medicines themselves or manage procedures may require an appropriate level of supervision. If it is not appropriate for a child to self-manage, relevant staff should help to administer medicines and manage procedures for them.

For our KS2 children, we recommend that they carry their own asthma pumps in their waist bag, this allows quick and easy access during all times of the day including PE and break and lunch time when they may recognise, they are exhibiting symptoms which could be relieved with use of their inhaler. Similarly, we recommend that KS2 children who have been administered an Epi pen should carry it also. Anaphylaxis is a severe, potentially life-threatening allergic reaction that can develop rapidly, a child exhibiting these symptoms would not necessarily be able to administer their own EpiPen however with it being on the child's body, trained staff would be able to quickly locate and administer the EpiPen if necessary. This is similar to other children who have potentially life-threatening illnesses such as epilepsy or diabetes.

### Nut Free

We are a 'nut free' school due to high number of children having allergies to nuts, including some children who would be at risk of anaphylaxis, this is a life-threatening reaction to an allergen. Please ensure your child does not have nut containing products in their lunchbox, this includes but is not limited to peanut butter spread, Nutella, snack bars containing nuts.

### Information sharing

Please ensure that you have updated the school office with any changes in your child's medical needs. We have careful but effective information sharing procedures designed to keep your child safe. Office staff may ask for medical information from medical practitioners to ensure absences are recorded correctly and to ensure that your child's records are up to date

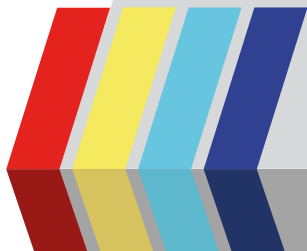
The Department for Education describe this as the role of parents/carers of children with medical needs:

Parents/carers should provide the school with sufficient and up-to-date information about their child's medical needs. They may in some cases be the first to notify the school that their child has a medical condition. Parents are key partners and should be involved in the development and review of their child's individual healthcare plan, and may be involved in its drafting. They should carry out any action they have agreed to as part of its implementation, e.g. provide medicines and equipment and ensure they or another nominated adult are contactable at all times. Parents /Carers know their children best, so effective information sharing will ensure that parents, school, and medical professionals can work collaboratively to keep your children safe and fulfil their potential.





**BEAM**  
PRIMARY SCHOOL



# Newsletter

July 2023

## School Catering

A Selection of Halal, organic, meat, fish and vegetarian dishes are available daily.

Children who are entitled to free school meals because of family circumstances bring an additional £1,320 into the school budget. Therefore, if your child is entitled to FSM you still need to apply and register your entitlement, otherwise the school will not receive this additional funding. To register please go to the website below:

<http://www.lbbd.gov.uk/free-school-meals-pupil-premium>

Please ensure if your child brings in their own packed lunch, they have their name clearly labelled and the contents do not contain nuts as we are a nut free school.

## Beam Community

Besides is a picture of Janai, who's sister was a former pupil here at Beam. Janai's mum raising money for research in SPD1. Where she was the second person in the world to have that genetic condition and leukodystrophy which is also a rare limited disease. If you wish to Donate to the fund please see below the email for the just giving page.

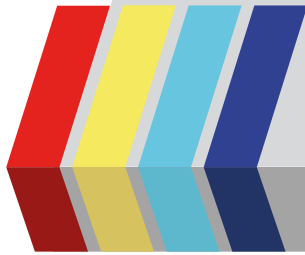


<https://www.justgiving.com/fundraising/janai5specialneedsfoundation>





**BEAM**  
PRIMARY SCHOOL



# Newsletter

July 2023

## PARENT COMMUNITY – Date for your Diary

### Parent Summit at Beam

We are pleased to announce that we will be holding our first 'Parent Summit' at Beam on **Thursday 14<sup>th</sup> September 2023 at 1:30-3:00pm**. This opportunity is in conjunction with VRU (Violence Reduction Unit) who have funded previous Parental Support Projects within other London Boroughs.

The aim of the project is to offer community-based, peer-to-peer support to families.

The multi-level prevention programme includes:

- a comprehensive online training offer to support parents/carers
- transition to secondary school support for children and their families
- mental health and therapeutic support to parents/carers

Violence Reduction Parent Champion programme with an active group of parent champions who organise their own training sessions, speak at public engagements, and produce a podcast.

Should you wish to attend, please complete link below expressing your interest.

<https://forms.office.com/Pages/ResponsePage.aspx?id=noiJDDX00EWYayGZ58m1XzctMe5lu-xEszY5FmGYUbRUQTNXUTFEODZNMlhYVzZGOUc0Vkm4TkdTWi4u>

